

# Adobe

## Adobe Developer Connection

[Sign in and join ADC](#) [Newsletters](#) [Feedback](#) [RSS](#)

## Dreamweaver Article

### Setting up a ColdFusion development environment for Dreamweaver

**Charles Nadeau**

Adobe

This article describes how to set up a development environment on a Windows or Mac computer that enables you to build ColdFusion web applications with Adobe Dreamweaver.

Setting up a development environment for Dreamweaver is a three-part process. First, you set up or get access to an Adobe ColdFusion application server. Second, you define a Dreamweaver site. Third, you connect to your database. This article follows this three-step process.

**Note:** Adobe does not provide technical support for third-party products such as database systems.

#### Requirements

In order to make the most of this article, you need the following software and files:

#### Dreamweaver CS3

[Try](#) [Buy](#)

#### ColdFusion 8

[Try](#) [Buy](#)

#### Sample files:

[cafe\\_cf.zip](#) (ZIP, 42K)

#### Set up a ColdFusion application server

To set up a ColdFusion development environment, you must first set up or get access to a ColdFusion application server. An application server is software that helps a web server process web pages containing server-side scripts or tags. When such a page is requested by a browser, the web server hands the page off to the application server for processing before sending the page to the browser.

This section describes how to install ColdFusion 8 Developer Edition on your Windows or Macintosh computer.

The ColdFusion 8 Developer Edition is for non-commercial use for developing and testing web applications. It is not licensed for deployment. It supports requests from the local host and two remote IP addresses. You can use it to develop and test your web applications as long as you want; the software does not expire.

This section contains the following topics:

[Install ColdFusion on your Windows computer](#)

[Install ColdFusion on your Macintosh](#)

[Test the ColdFusion server](#)

[Create a root folder for your application](#)

### **Install ColdFusion on your Windows computer**

To install ColdFusion on your Windows computer:

1. On the ColdFusion [downloads page](#), select the Windows version of the ColdFusion 8 Developer Edition and then click Download.
2. If applicable, log in to your system using the Administrator user account.
3. Close all open applications.
4. Double-click the ColdFusion 8 installer file.
5. Follow the onscreen installation instructions.

Some screens in the Installation Wizard are self-explanatory. For the following screens, however, select the following options:

At the Installer Configuration screen (see Figure 1), select the Server Configuration option.

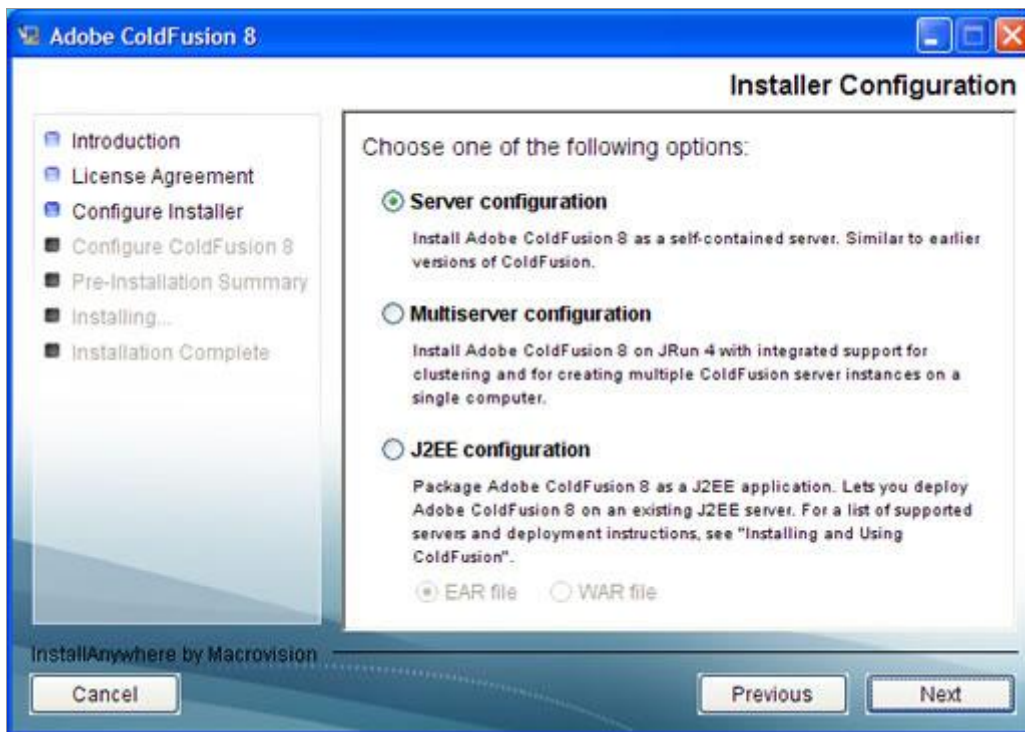


Figure 1. Selecting Server Configuration at the Installer Configuration screen (Windows).

At the Select Installation Directory screen (see Figure 2), accept the default C:\ColdFusion8 folder by clicking Next.

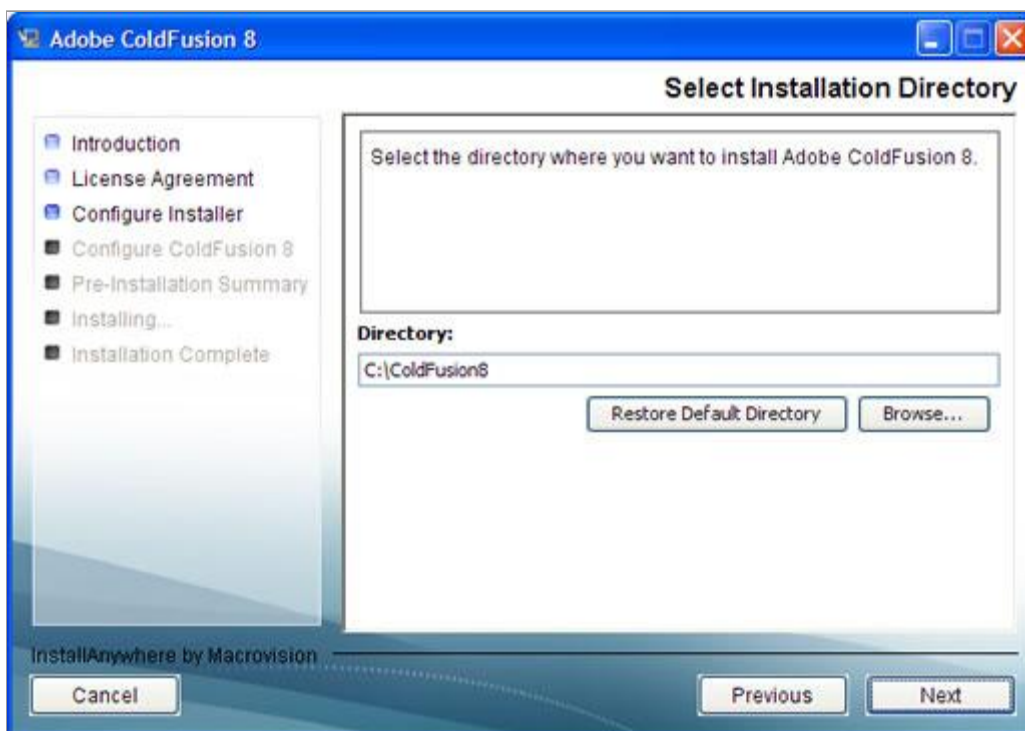
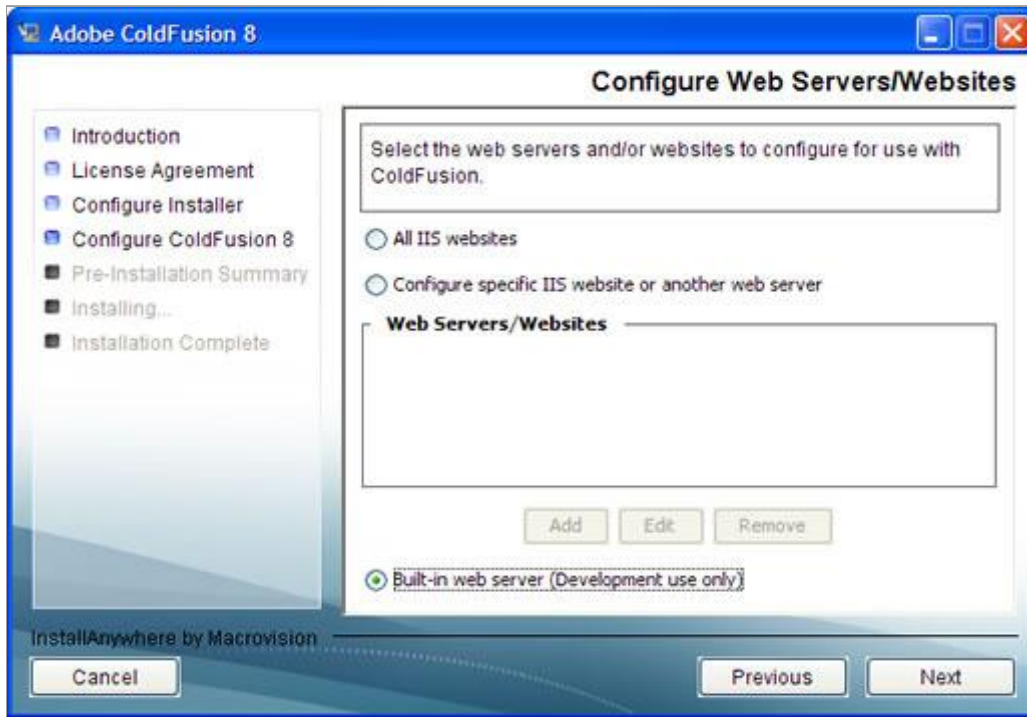


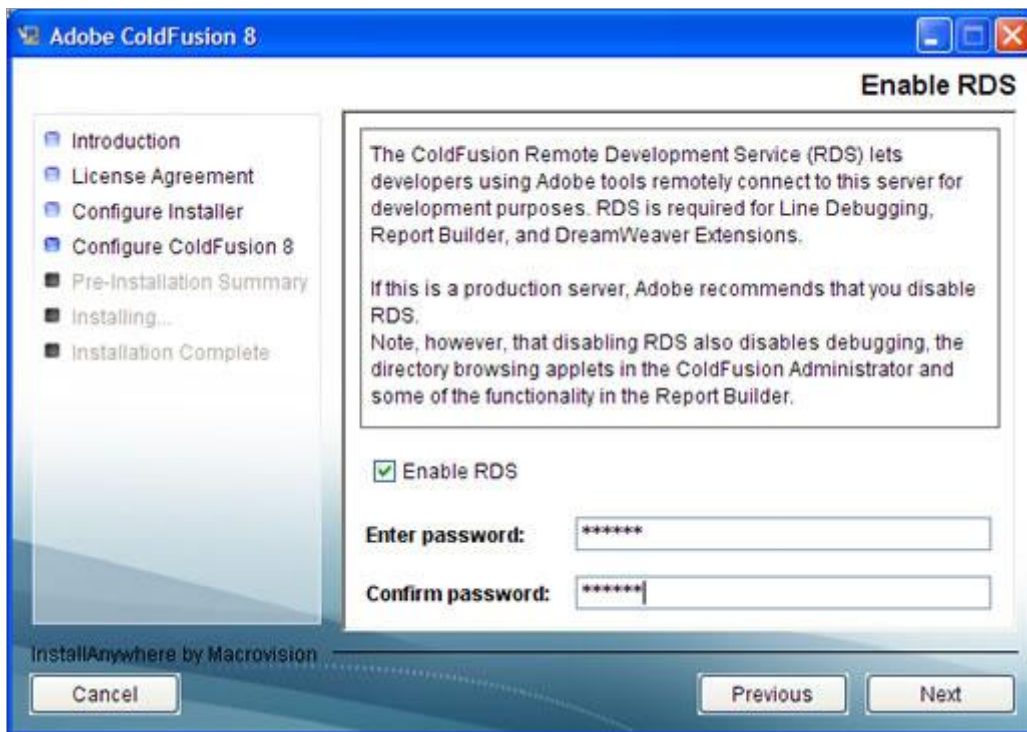
Figure 2. Selecting the installation directory at the Select Installation Directory screen (Windows).

At the Configure Web Server/Websites screen (see Figure 3), select the Built-in Web Server option at the bottom of the screen.



**Figure 3.** Selecting the Built-in Server option at the Configure Web Server screen (Windows).

At the Enable RDS screen (see Figure 4), make sure the Enable RDS option is selected, and then enter and confirm a password.



**Figure 4.** Enabling the RDS option before entering a password at the Enable RDS screen (Windows).

For more information, see [Installing and Using ColdFusion](#) on the Adobe website.

After installing and starting ColdFusion, test the server as described in "Test the ColdFusion server."

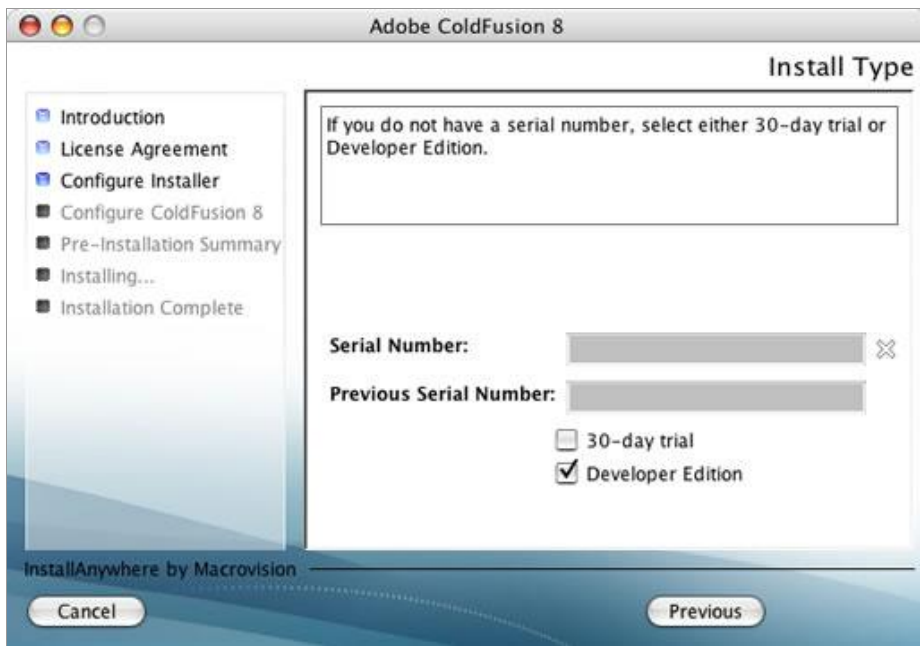
### Install ColdFusion on your Macintosh

To install ColdFusion on your Macintosh:

1. On the ColdFusion [downloads page](#), select the Mac OS X version of the ColdFusion 8 Developer Edition and then click Download.
2. If applicable, log in to your Macintosh using the Administrator user account.
3. Close all open applications.
4. Unzip the downloaded file and then double-click the ColdFusion 8 Installer file.
5. Follow the onscreen installation instructions.

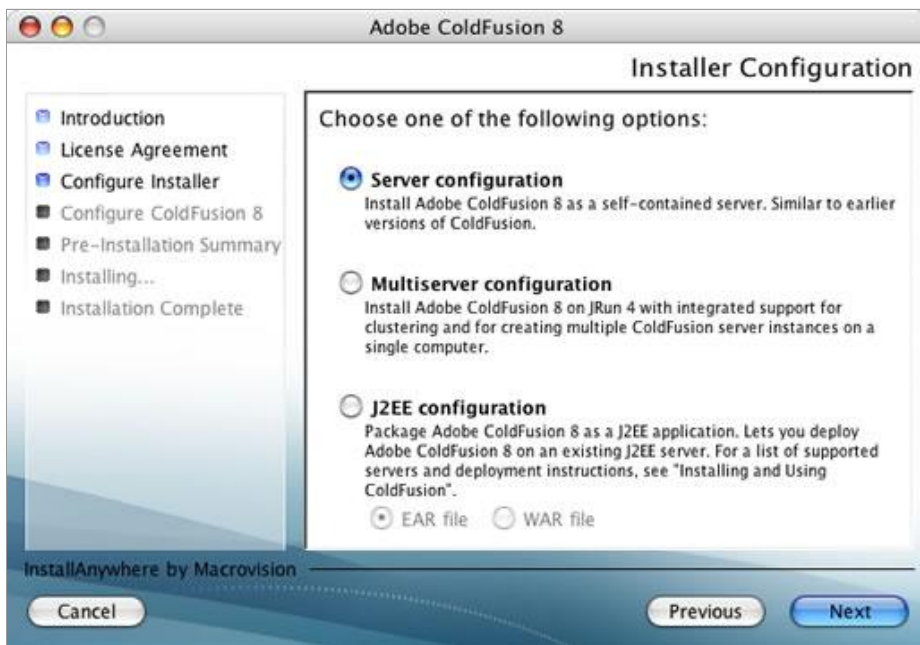
Some screens in the Installation Wizard are self-explanatory. For the following screens, however, select the following options:

At the Install Type screen (see Figure 5), select the Developer Edition option. You don't need a serial number to install and run this edition indefinitely.



**Figure 5.** Selecting the Developer Edition at the Install Type screen (Macintosh).

At the Installer Configuration screen (see Figure 6), select the Server Configuration option.



**Figure 6.** Selecting the Server Configuration option at the Installer Configuration screen (Macintosh).

At the Select Installation Directory screen (see Figure 7), accept the default Applications/ColdFusion8 folder by clicking Next.





**Figure 7.** Selecting the installation directory at the Select Installation Directory screen (Macintosh).

At the Configure Web Server/Websites screen (see Figure 8), select the Built-in Web Server option at the bottom of the screen.



**Figure 8.** Selecting the Built-in Server option at the Configure Web Server screen (Macintosh).

At the Enable RDS screen (see Figure 9), make sure the Enable RDS option is selected, and then enter and confirm a password.



**Figure 9.** Enabling the RDS option before entering a password at the RDS Password screen (Macintosh).

After the ColdFusion has finished installing, log in to the [Configuration Wizard](#). The wizard guides you through the remaining server configuration steps.

For more information on configuring the server, see [Installing and Using ColdFusion](#) on the Adobe website.

### Test the ColdFusion server

To test the ColdFusion server:

1. Make sure the ColdFusion server is started.

Depending on your decision during the installation, ColdFusion may start automatically when you start your computer or you may have to start it manually.

To start ColdFusion manually in Windows, select Start > Control Panel > Administrative Tools, then double-click Services. Right-click ColdFusion 8 Application Server and select Start. Right-click and start ColdFusion 8 ODBC Server and ColdFusion 8 ODBC Agent.

To start ColdFusion manually on a Macintosh, open Finder, go to Applications/ColdFusion8, and double-click ColdFusionLauncher. In the ColdFusionLauncher dialog box, click Start ColdFusion 8.

2. In Dreamweaver, or any text editor, create a plain-text file, and call it **timetest.cfm**.
3. In the file, enter the following code:



```
<p>This page was created at <b>  
<cfoutput>#TimeFormat(Now(), "HH:mm:ss")#</cfoutput>  
</b> on the computer running ColdFusion.</p>
```

This code displays the time when the page was processed on the server.

4. Copy the file to the web root folder of the computer running ColdFusion.

If ColdFusion is running on your local computer, copy the file to the following folder:

**Windows:** C:\ColdFusion8\wwwroot\

**Macintosh:** Applications/ColdFusion8/wwwroot/

5. In your web browser, enter the URL of your test page, and then press Enter.

If ColdFusion is running on your local computer, enter the following URL:

```
http://localhost:8500/timetest.cfm
```

By default, the ColdFusion server uses port 8500.

If the test page opens and displays the current time, the application server is running normally. The specified time is known as *dynamic content* because it changes every time you request the page. Click your browser's Refresh button to generate a new page with a different time.

**Note:** Looking at the source code (View > Source In Internet Explorer) will confirm that the page does not use any client-side JavaScript to achieve this effect.

If the page doesn't work as expected, check for the following possible errors:

- The file does not have a .cfm extension.
- You typed the page's file path (for example, C:\ColdFusion8\wwwroot\timetest.cfm) instead of its URL (for example, http://localhost:8500/timetest.cfm) in the browser's address text box.

If you type a file path in the browser (as you might be used to doing with normal HTML pages), you bypass the web server and application server. As a result, your page never gets processed by the server.

- The URL contains a typing mistake. Check for errors and make sure the filename is not followed by a slash, such as http://localhost/timetest.cfm/.

- The page code contains a typing mistake.

After successfully installing and testing the server software, create a root folder for your web application.

### Create a root folder for your application

You should create a root folder to store all the files of your web application. If ColdFusion is running on your computer, a good place to create the folder is in `ColdFusion8/wwwroot/folder`, as in the following examples:

**Windows:** `\ColdFusion8\wwwroot\MyWebApp`

**Macintosh:** `Applications/ColdFusion8/wwwroot/MyWebApp`

If you followed the installation instructions earlier in this article, then ColdFusion is set up to serve pages from its `wwwroot` folder. The web server will serve any page in this folder or in any of its subfolders in response to an HTTP request from a web browser.

### Define a ColdFusion site in Dreamweaver

When you define a ColdFusion site in Dreamweaver, you can specify the location of the site files on your hard disk as well as on a remote server running ColdFusion (for users). You can also specify the method for moving files and folders between the two locations. However, if you're interested only in setting up a personal development environment, and ColdFusion is running on your local computer, then you don't need to specify a remote server for your site yet.

Topics covered in this section:

[Specify your working folder](#)

[Specify a testing server for Dreamweaver](#)

[Copy the sample ColdFusion files](#)

### Specify your working folder

To specify your working folder:

1. In Dreamweaver, select **Site > Manage Sites**. In the Manage Sites dialog box, click the **New** button, and then select **Site**. The Site Definition dialog box appears.
2. If the **Basic** tab is showing, click the **Advanced** tab.
3. In the Site Name text box, enter a name for your web application, such as **Web app tutorial**. This name identifies the project in Dreamweaver.
4. Click the folder icon next to the Local Root Folder text box and browse to the root

folder you created for your application in the previous step, [Create a root folder for your application](#), and then click Select.

If you used the suggestion in this tutorial, then the folder is as follows:

**Windows:** `\ColdFusion8\wwwroot\MyWebApp`

**Macintosh:** `/Applications/ColdFusion8/wwwroot/MyWebApp`

5. In the HTTP Address text box, enter the URL you would enter in a web browser to open your web application. For example, if you follow the folder naming suggestions in this tutorial, then the HTTP address is as follows:

`http://localhost:8500/MyWebApp/`

**Note:** For more information, see [Test the ColdFusion server](#).

Leave the Site Definition dialog box open. You will specify your testing server next.

### **Specify a testing server for Dreamweaver**

In this section, you specify a testing server that Dreamweaver can use at design time. Because Dreamweaver does not have an internal ColdFusion server, it needs to use an external ColdFusion server to generate and display dynamic content in Design view and to connect to databases while you work. The testing server you specify in this tutorial is the ColdFusion server you installed on your local computer.

1. In the advanced Site Definition dialog box, click Testing Server in the Category list. The Testing Server screen appears.
2. Select ColdFusion from the Server Model pop-up menu.
3. Select Local/Network from the Access pop-up menu. Dreamweaver displays the folder you specified in the Local Info category. Leave the folder unchanged.
4. In the URL Prefix text box, enter the URL you would enter in a web browser to request a page in your web application.

To display live data in your pages while you work, Dreamweaver creates a temporary file, copies it to the designated folder on the server, and attempts to request it using the URL prefix.

Dreamweaver makes a best guess at the URL prefix based on the information you provided in the Site Definition dialog box. However, the suggested URL prefix may be incorrect. Correct or enter a new URL prefix if the suggestion in Dreamweaver is incorrect. For example, if you follow the folder naming suggestions in this tutorial, then the correct URL prefix is as follows:

`http://localhost:8500/MyWebApp/`

The URL prefix should always specify a folder rather than a particular page on the

site. Also, be sure to use the same capitalization you used when you created the folder.

5. Click OK to define the site and dismiss the Site Definition dialog box, then click Done to dismiss the Manage Sites dialog box.

You can start developing your own ColdFusion web applications in Dreamweaver. The following section describes how to set up the sample ColdFusion files included with this article.

### **Copy the sample ColdFusion files**

If you like, you can copy the sample files included with this article to the working folder on your hard disk. Copying the sample files and connecting to the sample database (described in the following section) also sets up the files for a follow-up tutorial, [Developing a web application with Dreamweaver](#), in the Dreamweaver Developer Center:

1. Download and unzip the samples file included with this article.
2. Paste the folders and files in the `cafe_cf` folder into the application root folder you specified when defining the Dreamweaver site.

Example:

```
/MyWebApp/  
  assets/  
  data/  
  send.cfm  
  view.cfm
```

The Dreamweaver site is now defined and the sample files installed. The next step is to connect to the sample database included in the sample files.

### **Connect to a database**

This section describes how to create a connection to a sample database.

The sample files you copied in the previous section include a sample Microsoft Access database file called `tutorial.mdb`. It also includes a SQL script called `tutorial.sql` that you can use to create a sample MySQL database. Because the Macintosh version of the ColdFusion server doesn't provide a native Microsoft Access database driver, Macintosh users can connect to the MySQL database. For instructions on creating the sample MySQL database, read my article, [Setting up a PHP development environment for Dreamweaver](#), in the Dreamweaver Developer Center.

When developing a ColdFusion web application in Dreamweaver, you connect to a database by selecting a ColdFusion data source defined in ColdFusion Administrator, the server's management console.

A ColdFusion data source is a type of shortcut to a database. Dreamweaver uses the data source to create a connection to the database.

For information on connecting to other database systems, see [Database connections for ColdFusion developers](#) in Dreamweaver LiveDocs or Using Dreamweaver (Help > Dreamweaver Help).

Topics covered in this section:

[Create a ColdFusion data source \(Windows\)](#)

[Create a ColdFusion data source \(Macintosh\)](#)

[Create a connection in Dreamweaver](#)

### **Create a ColdFusion data source (Windows)**

If you are running ColdFusion on a Windows machine, you can create a data source that points to the sample Microsoft Access database.

1. In Dreamweaver, open one of the ColdFusion pages in your site, such as view.cfm or send.cfm.
2. In the Databases panel (Window > Databases), click the Modify Data Sources button on the right side of the panel toolbar (the cylinder and pencil icon). Dreamweaver launches ColdFusion Administrator in a browser.
3. Enter your ColdFusion Administrator password and click Login.
4. Click the Data Sources link in the left sidebar.
5. In the Data Source Name text box, enter **connTownsend** (no spaces).
6. In the Driver pop-up menu, select Microsoft Access.
7. Click Add.
8. Click the Browse Server button next to the Database File text box, and then locate and select the tutorial.mdb database.

Depending on where you copied the sample files in the previous section, the file should be located in the following folder:

```
\ColdFusion8\wwwroot\MyWebApp\data\tutorial.mdb
```

9. Click Submit to accept your choices and close the dialog box.

### Create a ColdFusion data source (Macintosh)

If you're running ColdFusion on a Macintosh, you can connect to a MySQL database instead of the Microsoft Access database. Before completing this procedure, you must install MySQL and then create a sample database. For instructions on creating a sample MySQL database, see [Setting up a PHP development environment for Dreamweaver](#) in the Dreamweaver Developer Center.

After installing MySQL and creating the sample database, create a ColdFusion data source that points to your sample database. Make sure the MySQL server is started before completing the following procedure.

1. In Dreamweaver, open one of the ColdFusion pages in your site, such as view.cfm or send.cfm.
2. In the Databases panel (Window > Databases), click the Modify Data Sources button on the right side of the panel toolbar (the cylinder and pencil icon). Dreamweaver launches ColdFusion Administrator in a browser.
3. Enter your ColdFusion Administrator password and click Login.
4. Click the Data Sources link in the left sidebar.
5. In the Data Source Name text box, enter **connTownsend** (no spaces).
6. In the Driver pop-up menu, select MySQL (4/5).
7. Click Add to define a data source for your MySQL database.
8. Enter the following in the Database field: **CafeTownsend**. You created this database when you set up MySQL.
9. Enter the following in the Server field: **localhost**.
10. Enter the remaining settings:  
**Username:** *your MySQL username*  
**Password:** *your MySQL password*

For example, if your MySQL user name (also known as an account name) and password are Kensei and Te22y3, enter the following values:

**Username:** Kensei

**Password:** Te22y3

If you don't have a password, omit the password value as follows:

**Username:** Kensei

**Password:** <blank>

If you didn't define a user name while configuring your MySQL installation, enter root as the user name, as follows:



**Username:** root

**Password:** <blank>

11. Click Submit to create the new data source.

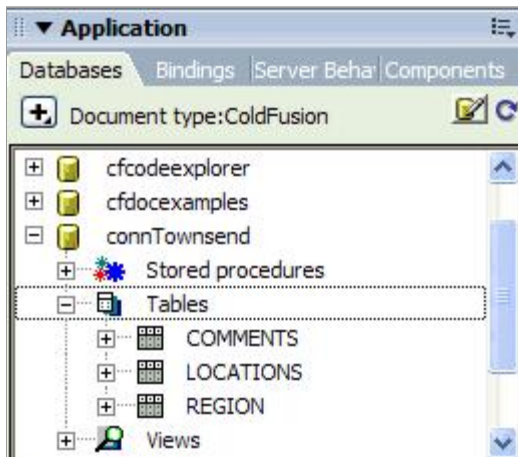
### Create a connection in Dreamweaver

The final step of the setup process is to create a connection to the database.

For ColdFusion applications, Dreamweaver creates the connection automatically for you. Open any ColdFusion page in the Cafe Townsend site in Dreamweaver, and then open the Databases panel (Window > Databases). Your ColdFusion data source should appear as a database connection in the panel.

If the connection does not appear, click the Refresh button on the Databases panel toolbar, complete the checklist in the panel, or consult [Troubleshooting database connections](#) in Dreamweaver LiveDocs or Using Dreamweaver (Help > Dreamweaver Help).

In the Databases panel, expand the connTownsend branch, and then expand the Tables branch. Three tables should appear as in Figure 10.



**Figure 10.** Expanded tables in the Databases panel.

### Where to go from here

If you want, you can now proceed to the [Developing a web application](#) tutorial in the Dreamweaver Developer Center. This follow-up tutorial uses the setup described in this tutorial to teach you how to display dynamic content on web pages. The tutorial also shows you how to create a form that saves visitor comments to the database.

### About the author

Charles Nadeau is a documentation manager at Adobe, where he leads the development of end-user content for Dreamweaver and acts as the Web Suite content architect. He also managed the documentation for Flex Builder 1 and 2, Fireworks 8, and the last few releases of Dreamweaver. Charles started at the company by writing the help for Dreamweaver UltraDev 1 and 4 as well as numerous articles and tutorials. Charles' interests include web design and development, motorcycling, and history.